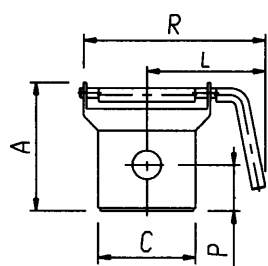
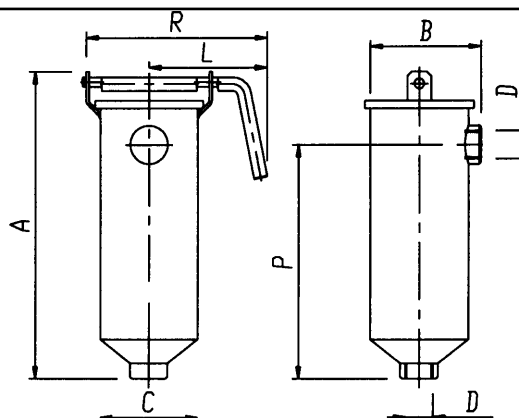
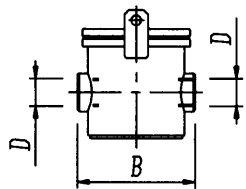
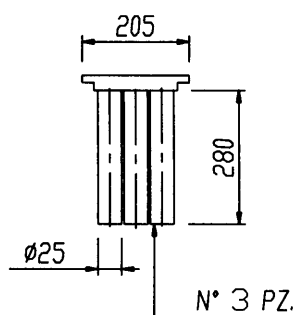


**PZT 93-253****PRESSURE IRON REMOVERS  
WITH PERMANENT MAGNETS**

TECHNICAL FEATURES	PZP 93	PZT 253
Magnetic bars	3 x $\varnothing$ 25	3 x $\varnothing$ 25
Max. operating temperature ( $^{\circ}$ C)	80	80
Max. operating pressure (bar)	0.5	0.5
Magnetic power in close field (Gauss)	12 000	12 000
Weight (kg)	3.1	4.8

**CONSTRUCTION FEATURES**

- Tank in AISI 304 stainless steel.
- Quick closure lid.

**PZT 93****PZT 253****N° 3 BARS**

N° 3 PZ.

*Dimensions in mm.*

MODEL	A	B	ØINT. C	ØD	E	ØF	G	I	L	P	R	X	Y
<b>PZT 93</b>	133,5	124	95,5	1"	-	113	-	90	123	48	193	3	Ø25
<b>PZT 253</b>	319	114,8	95,5	1"	1"	113	-	240	123	243	193	3	Ø25

**APPLICATIONS**

- Glaze iron removing

**ADVANTAGES**

- Easy to install on glazing lines
- Excellent iron removing performances
- Easy to clean

The data here indicated are purely indicative and can be modified by IN.TE.SA. without any notice.  
Precise values are communicated upon request. Any unauthorized copy of this document will be legally pursued.